



HYPNOTIK - FX

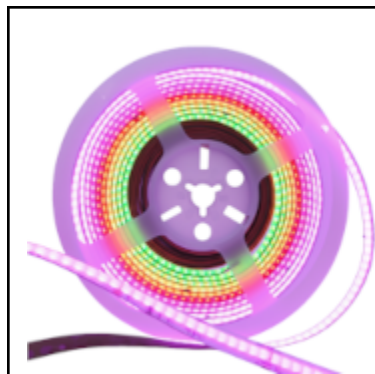
Getting Started Guide

Overview

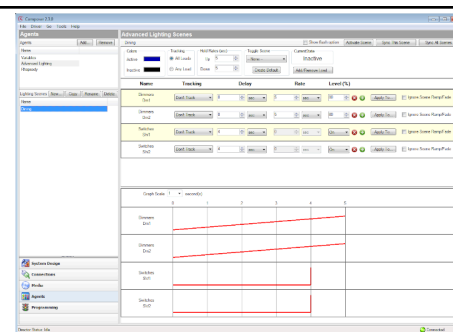
Hypnotik provides you with an ecosystem of smart devices able to connect with Control4 systems.

Definitions

In this Getting Started Guide we will use the hypnotik digital reactive light strips using the light controller.



Hypnotik Light Strip



Control4 Composer Pro



Hypnotik Smart Controller

Configuring your Control4 Project with SDDP

Once your devices are paired to the Gateway, please head to the “Discovered” tab in “Composer”. All the devices that have not been added to the project yet will be shown in the list:

Items			
Locations		Discovered	My Drivers
Type	Manufacturer	Model	Address
Lighting	Hypnotik	HYPNK-FX-SC-DIG-M-15A	HYPNOTIK-FX-SC-DIG-M-15A-HYPNOTIK-FX-4CC382BDA4F8
Lighting	Hypnotik	HYPNK-FX-SC-DIG-M-15A	HYPNOTIK-FX-SC-DIG-M-15A-HYPNOTIK-FX-F024F953A3F8

Please don't forget to add your Hypnotik Gateway to your Control 4 project to take full advantage of the Hypnotik ecosystem.

To add a device to your project, just double click on the item in the list and it will be added to the current room.

You can now change its name and review its properties. When you change the name of a device added through the "Discovered" tab, all the nested devices will be changed too.

Thanks to the SDDP protocol, your device's properties will be automatically filled in with the Light Device IP Address.

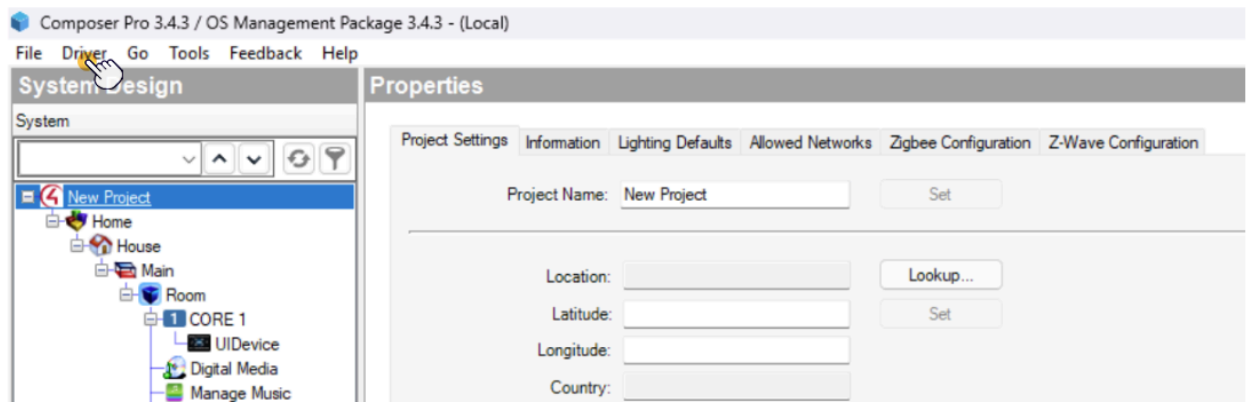
Configuring your Control4 Project without SDDP

If no device is found by the SDDP or SDDP is incorporated in the devices then use composer pro or composer express to insert the device in the Control4 system. You must have the necessary device drivers in the device where composer pro or composer express is installed.

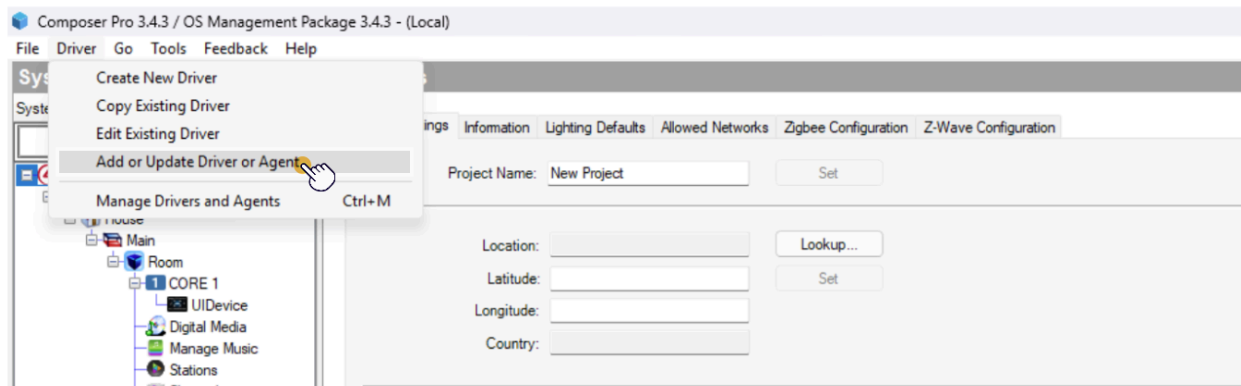
Composer Pro

Use default driver location path for composer pro so that Composer pro can add the device to the C4 system. Example: (C:\Users\username\OneDrive\Documents\Control4\Drivers) for the windows and one driver account added in the windows.

I. Click Driver in Composer Pro



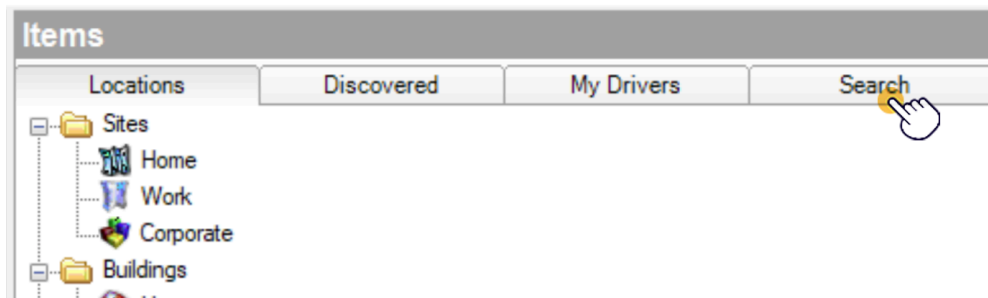
II. Then Click *Add or Update Driver or Agent*



III. Add required driver

If the above step does not work then the following steps will help.

Click the Search button the composer pro.



There will be an option to choose the search process between from local and online. Select the local option for searching the driver in the local device and select online for searching the driver from the C4 cloud. Then type your driver name and click search. Look for your driver in the search list and double click to add the device in the C4 system.

Hypnotik WLED Lights

Proxy Properties

Basic Control4 light properties are provided in the Properties section. These properties contain Defaults On Brightness sets default light brightness. Brightness Presets for Button Connection creates button link connection for button link, which is a preset. Color On Mode provides a color preset that is provided from color agents. Default Transition Rates are for handling the changing rates in brightness and color but brightness and color change transaction is not supported in the driver.

Properties

Dimmer Information

Brightness On Mode

Default On Brightness1000-100%

Brightness Presets for Button Connections

Brightness10-100%

Status LED Colors

Active Color

Inactive Color

Add PresetTest

Color On Mode

☐ Preset☒ Dim-To-Warm/Color Fade☐ Previous

On PresetOn ColorOn Color

NOTE: Edit Color Presets in Color Agent


Default Transition Rates

Default Brightness Rate0.750Seconds

Default Color Rate0.000Seconds

Advanced Properties

The device properties of the light device are visible in the composer pro. It is available in the composer pro *Properties* tab.

Advanced Properties	
Properties	Actions Documentation Lua
Log Level	2 - Warning
Log Mode	Off
Device IP	192.168.1.125
Commands Timer	10
Kelvin Min	2700
Kelvin Max	8000
Current Status	Connected
Colors	 R: <input type="text" value="255"/> G: <input type="text" value="160"/> B: <input type="text" value="0"/>
Segment Id	0

(Digital audio reactive light device)

Log Level

Allows the user to specify what information should be reported in the Lua tab between:

2 - Warning	▼
0 - Fatal	
1 - Error	
2 - Warning	
3 - Info	

Log Mode

It allows the user to enable and disable logging, as long as printing of the information from the driver.

Off	▼
Off	
Print	
Log	
Print and Log	

When requesting the list of devices within Composer (see “Actions” below), you need to select “Print” in this field.

Commands Timer

Allows controlling how frequently the control connection should be functioning for Input/output operations.

Current Status

Shows the current status of the connection. If the connection is working properly, it will show "Online". Otherwise, please check your network or the Gateway IP and Gateway MAC address above.

Device IP

Device IP shows IP address used by hypnotik light devices. It is automatically updated when a device is added from the discovered section. It can be manually updated to connect the light device.

Kelvin Min and **Kelvin Max** shows minimum and maximum value for CCT temperature that device is supported.

Color shows current color of the light device

Segment Id

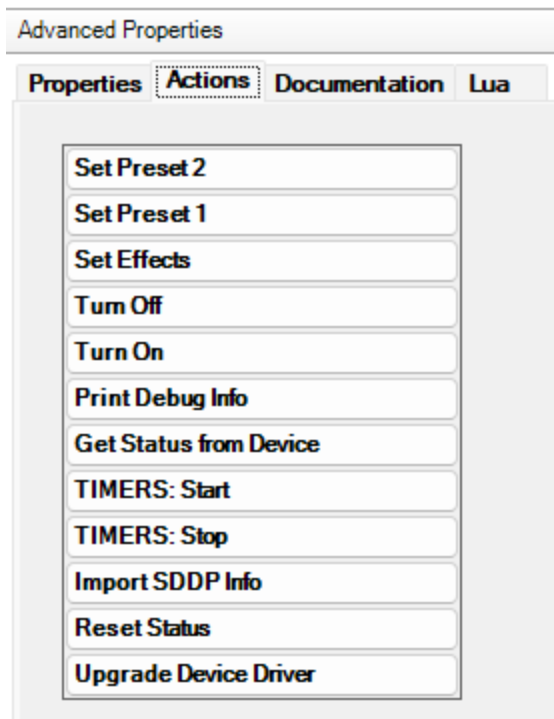
It shows which segment of given **Device IP** it controls (if light has multiple segments). Id value of -1 shows that it has no connection to any segment to given ip light device.

Master Segment

When there are multiple segments in a single light device. Some light tasks are handled by a single segment driver that is the master segment. It shows whether the given segment driver is a master segment or not.

Actions

Under the Actions tab, you can find some tools that will help you troubleshoot or interact with the device.



Get Status from Device

This feature allows retrieving the current Brightness, White Temperature, Hue and Saturation from the device. The update will take a few seconds.

Timers: Start, Timers: Stop

These features allow you to stop and restart the main timers used to send commands to the device and retrieve its status.

Reset Status

This action allows you to reset the driver and sync with the device again.

Set Effects

This feature is for testing Light Effects response from the light device.

Turn Off, Turn On

This feature allows you to turn on and off the light from the composer pro.

Set Preset 1, Set Preset 2

These two actions will activate preset with id 1 and 2 respectively if preset is added through hypnotik mobile app.

Print Debug Info will provide device information with segmented details.

Upgrade Device Driver will perform OTA upgrade for light device firmware.

In the Programming section **Button commands** and **Mode Commands** although visible their feature has not been implemented.